



ROTARY TEDDERS
6 and 8 rotors



ARIES 650 - 770 - 880



ARIES 650 - 770 - 880



High performance and a quality work

WOLAGRI rotary tedders are easy to use and extremely robust for producing excellent quality forage.

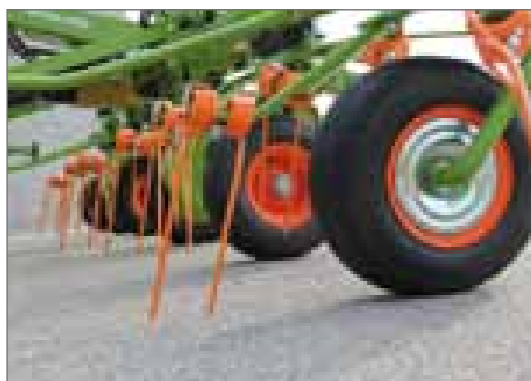
- Robust pivoted attachment with automatic locking-unlocking system: convenient to transport and safe on the road
- Extremely robust WOLINK 7-fingered coupling that does not require maintenance
- Double shock absorbers as standard for comfortable transport without jerks
- Rotor transmission with permanent greasing: maintenance-free
- Robust sectional frame with rectangular segments
- Mechanical centralised oblique position setting from driving cab
- Asymmetric forked tines in hard-wearing steel, thickness 9.5 mm



High capacity

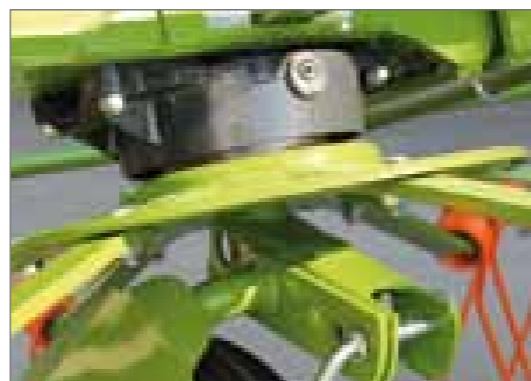
Homogeneous spreading for quality forage

The small diameter rotors and tine-carrying arms that intersect perfectly between themselves ensure homogeneous spreading. The tines of different lengths produce precise spreading and always guarantee a clean product. Excellent adaptation to the ground thanks to the reduced distance between tines and the wheels.



Robust and maintenance-free rotor transmission

The transmission is enclosed in a permanently greased hermetically sealed box that is maintenance-free. The gear box is pressed as a single piece. The bearings are of large size.



Maximum life without maintenance!!

High work capacity

To optimise the forces on the rotors the transmission is entrusted to a hexagonal shaft that does not require the use of keyways and/or teeth. The tubular chassis is sized to resist high stresses. The rotors are fixed by screws that go through the rectangular structure of the framework; some suitable spacers further reinforce their fixing points.



Transmission WoLink

This system consists of a WOLINK 7-fingered coupling that does not need greasing and always ensures perfect distribution of the strains. Thanks to this device the external rotors can be folded through 180° towards the inside without any danger.



ARIES 650 - 770 - 880



Robust and safe pivoted attachment

The robust and compact construction of the ARIES series ensures perfect operation on all types of forage

- Automatic locking for transportation in total safety
- Double shock-absorbers for perfect stability while working and on the road
- Safe on curves and in perfect alignment with the tractor

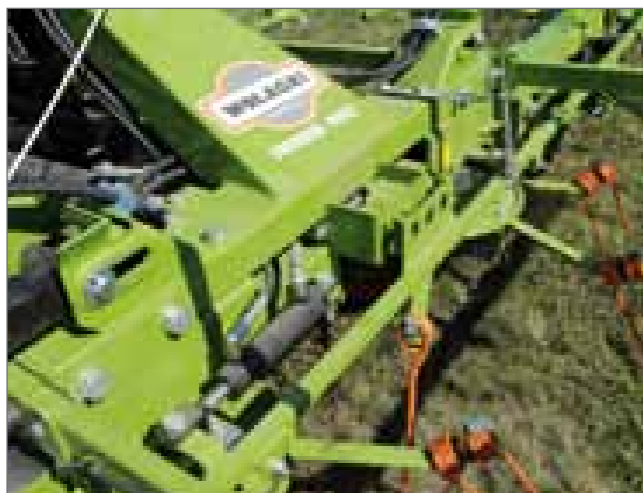


Centralised oblique positioning device

Impeccable work at the side of the field

The mechanical centralised oblique positioning device is standard. The action is done directly from the driving cab thanks to a rope and by operating reverse.

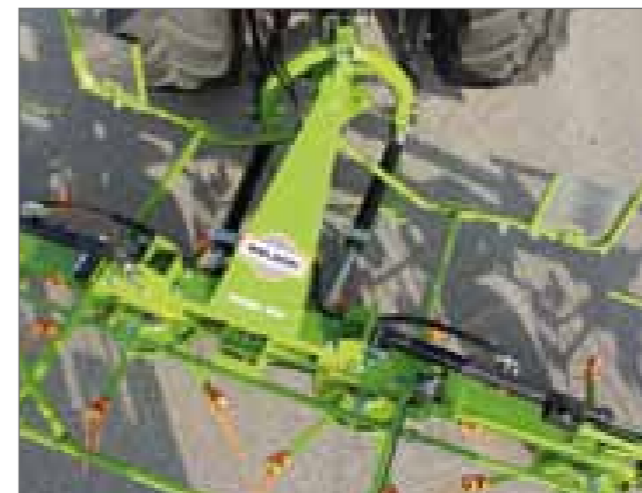
For those who want comfort without equal, Wolagri offers a hydraulic oblique positioner as an option that is worked by a double-effect distributor.



Reliability and simplicity

Double adjustable shock-absorbers

For safe transport also around curves the ARIES rotary tedders are assembled with series 2 powerful shock-absorbers that increase working comfort without swaying.



Automatic blocking

The new locking-unlocking system blocks the machine in the transport position ensuring constant alignment with the tractor.



ARIES 650 - 770 - 880



Fast and easy adjustments

Perfect adjustment to every type and volume of forage to be handled.

- Fast and easy adjustment of the rotor inclination angle
- Anti-roll deflectors: arms and wheels always free (standard)
- Safety locks for preventing loss of the tines (standard)



Perfect in all conditions

Forming night-time windrows

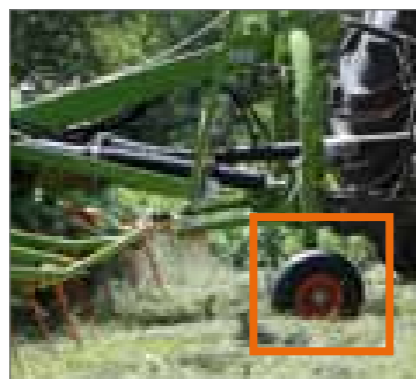
Thanks to a reducer it is possible to form windrows at night-time, limiting the exposure of the forage to humidity.

Additional support wheels

A support wheel applied at the third point is height adjustable and ensures that the machine faithfully follows the shape of the land.

Balloon wheel

The ARIES 770 and 880 models are equipped as standard with Superballoon 220/45-8 tyres on the central rotors. The other rotors have 16x6.50-8 balloon tyres.

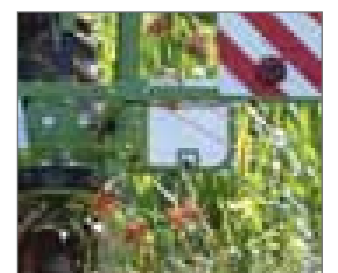


Compact and safe

The ARIES 770 and 880 models when folded have a height less than 3.3m. Shifting onto roads and garaging are fast and safe.



3,25 m



Transport safety

All the ARIES series rotary tedders have lights and road signal panels.

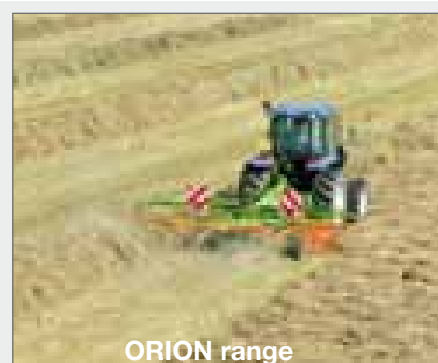
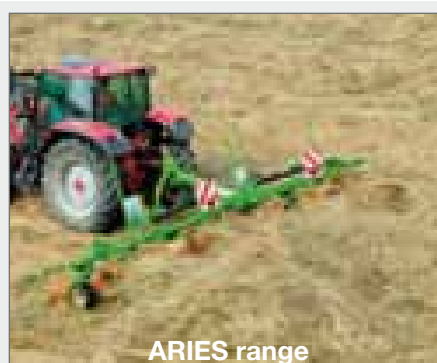
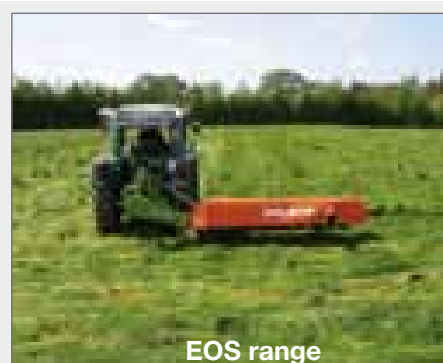


Spare wheel

Available as an option, the kit comes complete with support.

Characteristic	ARIES 650	ARIES 770	ARIES 880
Hitch category	3-point hitch / Cat. II		
Type of connection	Pivoting		
Working width - cm	650	770	870
Transport width - cm	299	299	299
Height (closed)	347	328	325
Number of rotors	6	8	8
Number of arms per rotor	6	5	6
Tyre size – 2 central rotors	16x6.50-8	220/45-8	220/45-8
Tyre size - side wheels	16x6.50-8	16x6.50-8	16x6.50-8
Required power (Kw / HP)	44/60	51/70	59/80
Pto shaft with clutch	standard	standard – free wheel	
Mechanical centralised oblique positioner	Hydraulic option on request		
Synchronised hydraulic folding	standard		
Wheel guards	standard		
Light and Road signal kit	standard		
Head double shock-absorber	standard		
Hydraulic equipment	1 SE	1 DE	1 DE
Weight - Kg	915	1190	1250

The WOLAGRI range: High PERFORMANCE, QUALITY AND RELIABILITY



www.tonuttigroup.com

TONUTTI WOLAGRI S.p.A.

Head Office

and Production Plant

Via Gino Tonutti 3 - 33047
Remanzacco (UD) Italy
Phone + 39 0432 667015
Fax + 39 0432 668282
info@tonuttigroup.com

Production Plant

Via Veneto 12/A - 46029
Suzzara (MN) Italy
Phone +39 0376 51211
Fax +39 0376 522215
info@tonuttigroup.com

Tonutti U.S.A. Inc

1655 Panama Street
Memphis, TN 38108
Phone (901) 385 8841
Fax (901) 385 8288
info@tonuttiusa.com

Tonutti Russia T.W. Limited

3 Tekhnicheskaya Street
Perm, 614070 Russia
Phone 007 3422 909096
Fax 007 3422 909096
twltd@perm.ru